

HONEYWELL
PART NUMBER
311SX5-T
PRODUCT CODE
VDS0050

REV	DOCUMENT	CHANGED BY	CHECK
12	0038558	SS 08MAY08	BLR

B

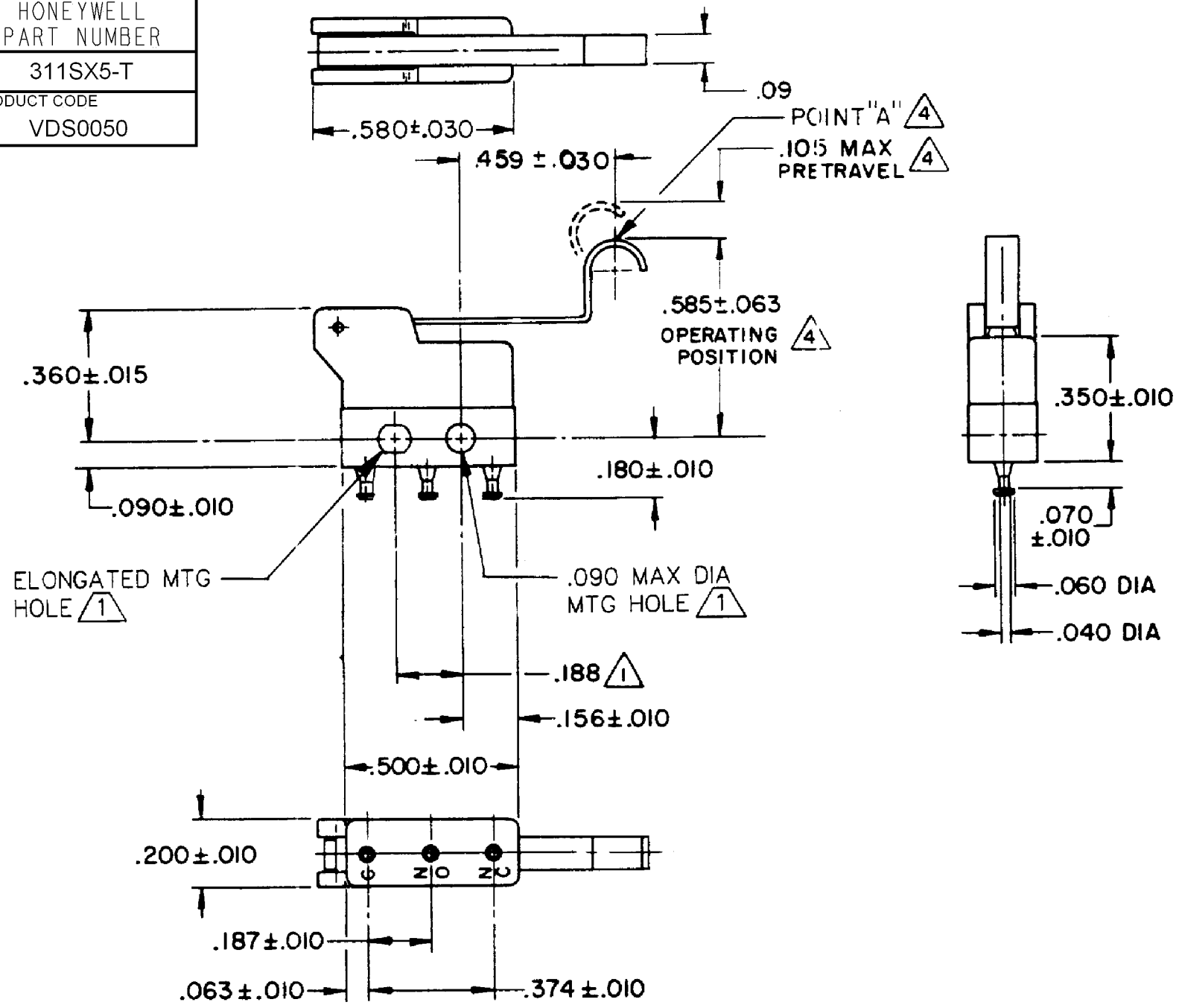
B

A

A

A

A



- NOTES
- 1 MOUNTING HOLE WILL ACCEPT PINS OR SCREWS OF .087 MAX DIA ON $.188 \pm .002$ CENTERS
 - 2 - TERMINALS ARE PLATED FOR SOLDERING
 - 3 - SWITCH WILL WITHSTAND TEMPERATURE OF 250° F
 - 4 CHARACTERISTICS ARE TAKEN AT POINT "A"

RELEASE NO.	PR-861
REPLACES	X41463-SX

CHARACTERISTICS Δ

OPERATING FORCE - - -30 GRAM MAX

RELEASE FORCE - - - 5 GRAM MIN

DIFFERENTIAL TRAVEL - - .035 MAX

OVERTRAVEL - - - - .022 MIN

ELECTRICAL DATA

CONTACT ARRANGEMENT
SPDT

	28 VOLTS DC RATING	115 VOLTS AC, 60 CPS
	SEA LEVEL	50,000 FT
INDUCTIVE	3 AMP	2 AMP
	5 AMP	5 AMP
RESISTIVE	5 AMP	4 AMP
	5 AMP	5 AMP

APPROVALS

KEMA, CE	5A 250 V - T125	5E4	CE
UL, CSA	5A 250 VAC	UL	CE

DESIGN UNITS: INCH

TOLERANCES UNLESS NOTED:

NO PLACE	X	±
ONE PLACE	.X	±
TWO PLACE	.XX	±
THREE PLACE	.XXX	±
FOUR PLACE	.XXXX	±
ANGLES		±

THIRD ANGLE PROJECTION

DRAWN	SPK	26FEB08
CHECK	RJ	26FEB08
THIS DRAWING COVERS A PROPRIETARY ITEM AND IS THE PROPERTY OF HONEYWELL. THIS DRAWING IS NOT TO BE COPIED OR USED WITHOUT THE PERMISSION OF HONEYWELL.		
INTERPRET PER ANSI Y14.5M-1982 OTHER HONEYWELL ENGINEERING STANDARDS MAY APPLY		
RASTER		

Honeywell			
TITLE SWITCH - BASIC			
SIZE	TYPE	DRAWING NAME	REV
B	I	311SX5-T	12
SCALE	-	WEIGHT:	SHEET 1 OF 1